

INBOUND CARGO STATISTICS
NMIA VS SIA
1985-2006

MONTH	NMIA (MT)	Variance NMIA/SIA	% inc/dec	SIA (MT)
1985	7,230.00	5,430.00	301.67	1,800.00
1986	7,710.00	6,085.00	374.46	1,625.00
1987	8,373.00	5,714.00	214.89	2,659.00
1988	17,328.00	14,400.00	491.80	2,928.00
1989	15,133.00	13,156.00	665.45	1,977.00
1990	12,167.00	9,296.00	323.79	2,871.00
1991	10,723.00	9,734.00	984.23	989.00
1992	8,809.00	1,996.00	29.30	6,813.00
1993	11,923.00	1,255.00	11.76	10,668.00
1994	13,355.00	8,928.00	201.67	4,427.00
1995	15,890.00	11,976.00	305.98	3,914.00
1996	14,782.00	10,688.00	261.06	4,094.00
1997	12,485.00	7,560.00	153.50	4,925.00
1998	14,760.00	11,127.00	306.28	3,633.00
1999	12,209.00	8,305.00	212.73	3,904.00
2000	11,238.00	7,983.00	245.25	3,255.00
2001	9,504.00	6,754.00	245.60	2,750.00
2002	6,919.00	4,642.00	203.86	2,277.00
2003	8,089.00	5,823.00	256.97	2,266.00
2004	8,100.00	5,869.00	263.07	2,231.00
2005	8,294.00	5,473.00	194.01	2,821.00
2006	7,454.00	5,768.00	342.11	1,686.00

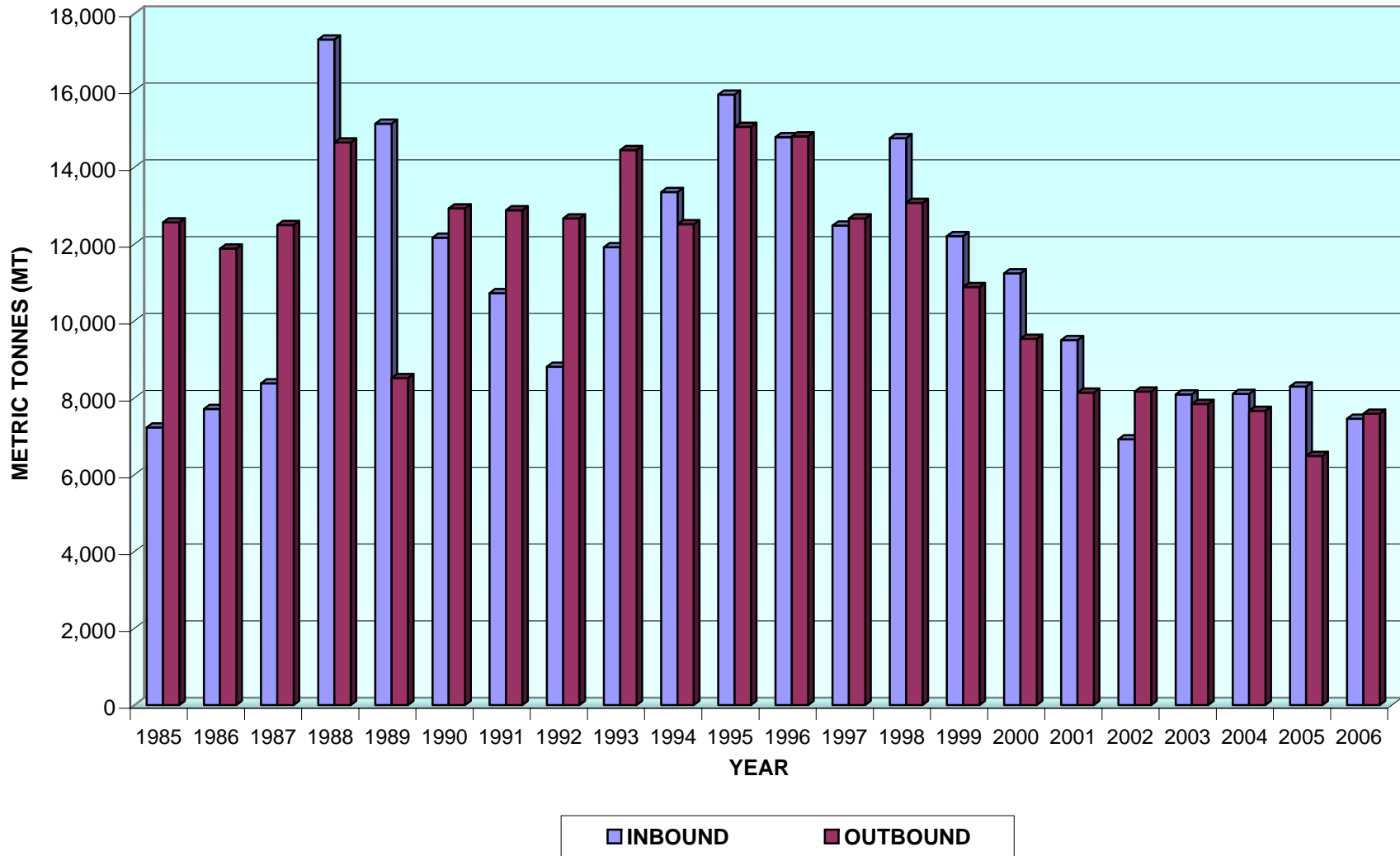
*MT: Metric Tonnes

OUTBOUND CARGO STATISTICS
NMIA VS SIA
1985-2006

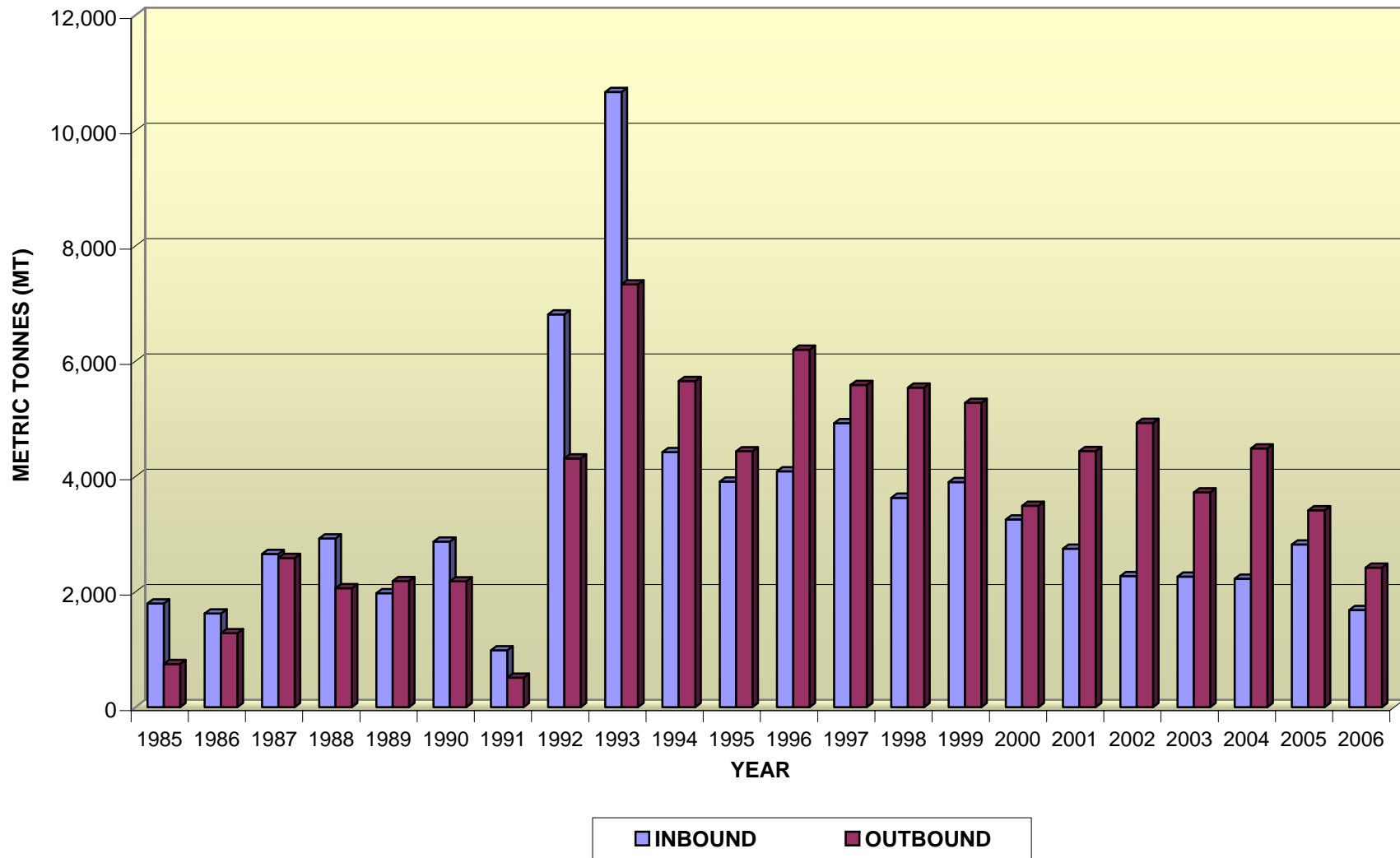
MONTH	NMIA (MT)	Variance NMIA/SIA	% inc/dec	SIA (MT)
1985	12,564.00	11,814.00	1,575.20	750.00
1986	11,883.00	10,597.00	824.03	1,286.00
1987	12,500.00	9,912.00	383.00	2,588.00
1988	14,645.00	12,579.00	608.86	2,066.00
1989	8,513.00	6,326.00	289.25	2,187.00
1990	12,927.00	10,745.00	492.44	2,182.00
1991	12,882.00	12,370.00	2,416.02	512.00
1992	12,670.00	8,353.00	193.49	4,317.00
1993	14,446.00	7,114.00	97.03	7,332.00
1994	12,521.00	6,862.00	121.26	5,659.00
1995	15,055.00	10,618.00	239.31	4,437.00
1996	14,806.00	8,606.00	138.81	6,200.00
1997	12,672.00	7,084.00	126.77	5,588.00
1998	13,075.00	7,532.00	135.88	5,543.00
1999	10,882.00	5,604.00	106.18	5,278.00
2000	9,539.00	6,045.00	173.01	3,494.00
2001	8,131.00	3,687.00	82.97	4,444.00
2002	8,160.00	3,227.00	65.42	4,933.00
2003	7,839.00	4,111.00	110.27	3,728.00
2004	7,657.00	3,166.00	70.50	4,491.00
2005	6,484.00	3,066.66	89.74	3,417.34
2006	7,582.00	5,159.00	212.92	2,423.00

*MT: Metric Tonnes

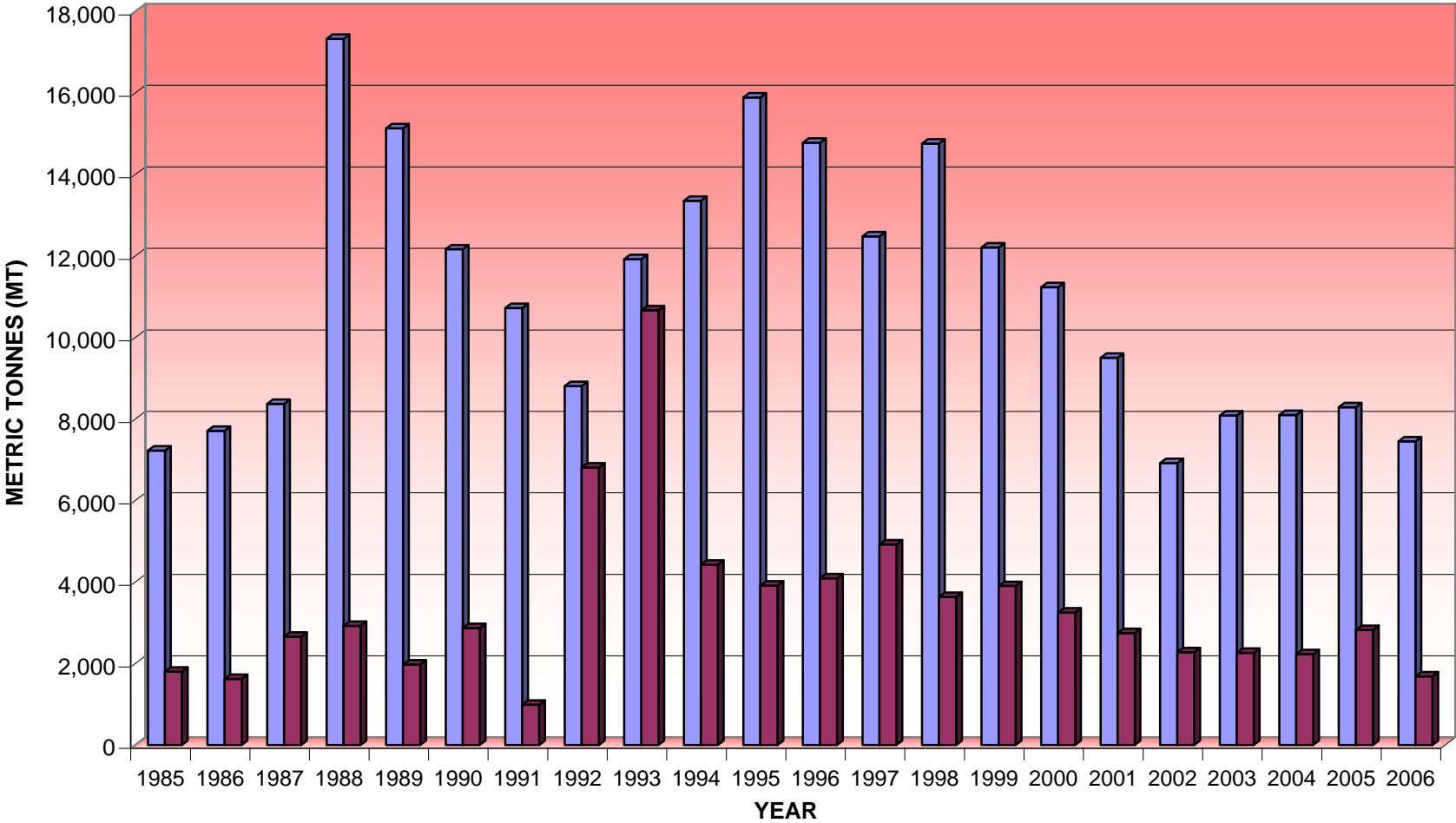
CARGO STATISTICS/1985-2006
NORMAN MANLEY INTERNATIONAL AIRPORT/KIN



CARGO STATISTICS/1985-2006
SANGSTER INTERNATIONAL AIRPORT/MBJ

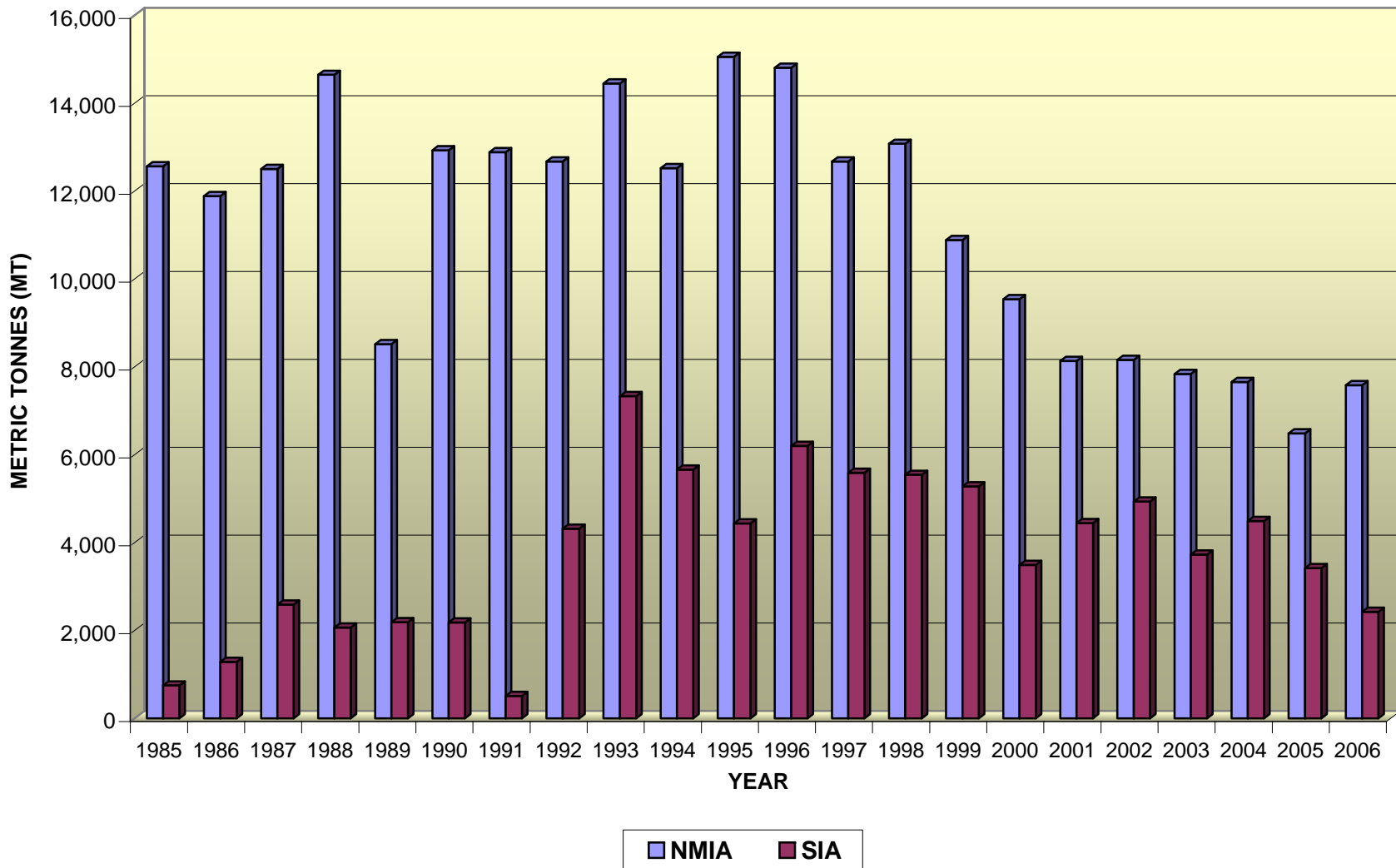


COMPARISON INBOUND CARGO STATISTICS 1985-2006
(NMIA VS SIA)



NMIA
 SIA

COMPARISON OUTBOUND CARGO STATISTICS 1985-2006
NMIA VS SIA)



CARGO STATISTICS/1985-2006
NORMAN MANLEY INTERNATIONAL AIRPORT/KIN

YEAR	INBOUND (MT)	OUTBOUND (MT)	TOTAL (MT)
1985	7,230.00	12,564.00	19,794.00
1986	7,710.00	11,883.00	19,593.00
1987	8,373.00	12,500.00	20,873.00
1988	17,328.00	14,645.00	31,973.00
1989	15,133.00	8,513.00	23,646.00
1990	12,167.00	12,927.00	25,094.00
1991	10,723.00	12,882.00	23,605.00
1992	8,809.00	12,670.00	21,479.00
1993	11,923.00	14,446.00	26,369.00
1994	13,355.00	12,521.00	25,876.00
1995	15,890.00	15,055.00	30,945.00
1996	14,782.00	14,806.00	29,588.00
1997	12,485.00	12,672.00	25,157.00
1998	14,760.00	13,075.00	27,835.00
1999	12,209.00	10,882.00	23,091.00
2000	11,238.00	9,539.00	20,777.00
2001	9,504.00	8,131.00	17,635.00
2002	6,919.00	8,160.00	15,079.00
2003	8,089.00	7,839.00	15,928.00
2004	8,100.00	7,657.00	15,757.00
2005	8,294.00	6,484.00	14,778.00
2006	8,454.00	7,582.00	16,036.00

*MT: Metric Tonnes

CARGO STATISTICS/1985-2005
SANGSTER INTERNATIONAL AIRPORT/MBJ

YEAR	INBOUND (MT)	OUTBOUND (MT)	TOTAL (MT)
1985	1,800.00	750.00	2,550.00
1986	1,625.00	1,286.00	2,911.00
1987	2,659.00	2,588.00	5,247.00
1988	2,928.00	2,066.00	4,994.00
1989	1,977.00	2,187.00	4,164.00
1990	2,871.00	2,182.00	5,053.00
1991	989.00	512.00	1,501.00
1992	6,813.00	4,317.00	11,130.00
1993	10,668.00	7,332.00	18,000.00
1994	4,427.00	5,659.00	10,086.00
1995	3,914.00	4,437.00	8,351.00
1996	4,094.00	6,200.00	10,294.00
1997	4,925.00	5,588.00	10,513.00
1998	3,633.00	5,543.00	9,176.00
1999	3,904.00	5,278.00	9,182.00
2000	3,255.00	3,494.00	6,749.00
2001	2,750.00	4,444.00	7,194.00
2002	2,277.00	4,933.00	7,210.00
2003	2,266.00	3,728.00	5,994.00
2004	2,231.00	4,491.00	6,722.00
2005	2,821.00	3,417.34	6,238.34
2006	1,686.00	2,423.00	4,109.00

*MT: Metric Tonnes

TOTAL CARGO MOVEMENT-NMIA & SIA
1985-2005

YEAR	NMIA (MT)	SIA (MT)
1985	19,794.00	2,550.00
1986	19,593.00	2,911.00
1987	20,873.00	5,247.00
1988	31,973.00	4,994.00
1989	23,646.00	4,164.00
1990	25,094.00	5,053.00
1991	23,605.00	1,501.00
1992	21,479.00	11,130.00
1993	26,369.00	18,000.00
1994	25,876.00	10,086.00
1995	30,945.00	8,351.00
1996	29,588.00	10,294.00
1997	25,157.00	10,513.00
1998	27,835.00	9,176.00
1999	23,091.00	9,182.00
2000	20,777.00	6,749.00
2001	17,635.00	7,194.00
2002	15,079.00	7,210.00
2003	15,928.00	5,994.00
2004	15,757.00	6,722.00
2005	14,778.00	6,238.34
2006	16,036.00	4,109.00

*MT: Metric Tonnes