

AIRCRAFT MOVEMENT ANNUAL STATISTICS

1991-2010

KINGSTON/Norman Manley Int'l Airport

	1991	1992	1993	1994	1995	1996	1997	1998	1999	2000	2001	2002	2003	2004	2005	2006	2007	2008	2009	2010
Int'l Sched. Comm.	14,122	13,154	13,164	13,959	13,754	16,436	16,887	17,074	16,797	17,522	17,252	16,139	15,272	15,309	14,835	17,423	15,872	15,750	16,357	16,541
Int'l Non-Sched. Comm.	8	25	460	1,215	2,147	541	664	1,517	1,197	1,509	2,400	4,551	4,124	2,719	3,884	3,481	2,804	2,837	256	535
Domestic Commercial	16,001	21,618	15,121	9,438	9,423	16,663	12,747	15,600	20,690	16,043	14,638	11,785	3,589	1,736	1,890	1,016	1,939	1,985	1,312	1,406
Military	3,705	3,893	2,354	2,230	1,548	2,148	1,503	910	1,580	1,710	2,175	2,037	2,010	1,282	1,256	1,474	2,397	3,010	3,161	4,218
Private	1,469	2,171	2,549	2,857	2,743	2,149	1,856	1,489	1,950	3,197	2,831	5,166	2,896	3,435	4,129	4,305	5,464	5,941	4,598	4,705
Total Movement	35,305	40,861	33,648	29,699	29,615	37,937	33,657	36,590	42,214	39,981	39,296	39,678	27,891	24,481	25,994	27,699	28,476	29,523	25,684	27,405
Total Arrivals	17,666	20,460	16,845	14,869	14,810	18,965	16,840	18,289	21,118	20,006	19,646	19,855	13,967	12,275	13,012	13,863	14,251	14,768	12,854	13,707
Total Departures	17,639	20,401	16,803	14,830	14,805	18,972	16,817	18,301	21,096	19,975	19,650	19,823	13,924	12,192	12,982	13,836	14,225	14,755	12,830	13,698
Total Movements	35,305	40,861	33,648	29,699	29,615	37,937	33,657	36,590	42,214	39,981	39,296	39,678	27,891	24,467	25,994	27,699	28,476	29,523	25,684	27,405

MONTEGO BAY/Sangster Int'l

	1991	1992	1993	1994	1995	1996	1997	1998	1999	2000	2001	2002	2003	2004	2005	2006	2007	2008	2009	2010
Int'l Sched. Comm.	14,026	15,599	15,590	15,924	15,490	17,684	18,581	18,648	20,023	21,569	22,818	23,100	24,794	26,026	19,959	20,895	20,890	21,720	19,150	19,177
Int'l Non-Sched. Comm.	2,728	3,517	4,819	5,853	5,770	5,401	6,392	7,237	6,012	6,357	5,726	5,363	6,682	7,033	7,330	7,817	8,319	5,697	5,879	8,040
Domestic Commercial	16,628	15,489	20,614	20,810	17,482	13,728	26,492	27,653	29,730	30,233	37,007	35,447	25,932	21,871	23,462	16,458	12,902	8,991	8,019	7,171
Military	1,134	934	562	640	452	550	477	286	574	272	273	340	573	580	346	290	441	246	311	300
Private	2,185	2,452	3,010	3,883	5,572	6,086	2,857	3,163	3,726	2,685	2,711	2,268	2,095	2,352	1,845	2,551	3,237	5,256	4,757	5,157
Total Movement	36,701	37,991	44,595	47,110	44,766	43,449	54,799	56,987	60,065	61,116	68,535	66,518	60,076	57,862	52,942	48,011	45,789	41,910	38,116	39,845
Total Arrivals	18,347	18,999	22,302	23,553	22,379	21,723	27,392	28,480	30,016	30,564	34,232	33,249	30,024	28,917	26,434	24,093	22,888	21,013	19,042	19,923
Total Departures	18,354	18,992	22,293	23,557	22,387	21,726	27,407	28,507	30,049	30,552	34,303	33,269	30,052	28,945	26,508	23,918	22,901	20,897	19,074	19,922
Total Movements	36,701	37,991	44,595	47,110	44,766	43,449	54,799	56,987	60,065	61,116	68,535	66,518	60,076	57,862	52,942	48,011	45,789	41,910	38,116	39,845

NOTE TO READER

For international flights traversing both Sangster International Airport (SIA) and Norman Manley International Airport (NMIA) each arrival and departure is counted when recording aircraft movements. So for a flight arriving from Miami and landing at SIA in Montego Bay and continuing from there to NMIA in Kingston each landing and take off would be recorded by Air Traffic Services.

INTERNATIONAL AIRPORT BY CATEGORY
AIRCRAFT MOVEMENTS (1991 - 2010)
NMIA & SIA

TOTAL MOVEMENT

	1991	1992	1993	1994	1995	1996	1997	1998	1999	2000	2001	2002	2003	2004	2005	2006	2007	2008	2009	2010
NMIA	35,305	40,861	33,648	29,699	29,615	37,937	33,657	36,590	42,214	39,981	39,296	39,678	27,891	24,467	25,994	27,699	28,476	29,523	25,684	27,405
SIA	36,701	37,991	44,595	47,110	44,766	43,449	54,799	56,987	60,065	61,116	68,535	66,518	60,076	57,862	52,942	48,011	45,789	41,910	38,116	39,845
TOTAL	72,006	78,852	78,243	76,809	74,381	81,386	88,456	93,577	102,279	101,097	107,831	106,196	87,967	82,329	78,936	75,710	74,265	71,433	63,800	67,250

INTERNATIONAL SCHEDULED

	1991	1992	1993	1994	1995	1996	1997	1998	1999	2000	2001	2002	2003	2004	2005	2006	2007	2008	2009	2010
NMIA	14,122	13,154	13,164	13,959	13,754	16,436	16,887	17,074	16,797	17,522	17,252	16,139	15,272	15,309	14,835	17,423	15,872	15,750	16,357	16,541
SIA	14,026	15,599	15,590	15,924	15,490	17,684	18,581	18,648	20,023	21,569	22,818	23,100	24,974	26,026	19,959	20,895	20,890	21,720	19,150	19,177
TOTAL	28,148	28,753	28,754	29,883	29,244	34,120	35,468	35,722	36,820	39,091	40,070	39,239	40,246	41,335	34,794	38,318	36,762	37,470	35,507	35,718

INTERNATIONAL NON-SCHEDULED

	1991	1992	1993	1994	1995	1996	1997	1998	1999	2000	2001	2002	2003	2004	2005	2006	2007	2008	2009	2010
NMIA	8	25	460	1,215	2,147	541	664	1,517	1,197	1,509	2,400	4,551	4,124	2,719	3,884	3,481	2,804	2,837	256	535
SIA	2,728	3,517	4,819	5,853	5,770	5,401	6,392	7,237	6,012	6,357	5,726	5,363	6,682	7,033	7,330	7,817	8,319	5,697	5,879	8,040
TOTAL	2,736	3,542	5,279	7,068	7,917	5,942	7,056	8,754	7,209	7,866	8,126	9,914	10,806	9,752	11,214	11,298	11,123	8,534	6,135	8,575

DOMESTIC COMMERCIAL

	1991	1992	1993	1994	1995	1996	1997	1998	1999	2000	2001	2002	2003	2004	2005	2006	2007	2008	2009	2010
NMIA	16,001	21,618	15,121	9,438	9,423	16,663	12,747	15,600	20,690	16,043	14,638	11,785	3,589	1,736	1,890	1,016	1,939	1,985	1,312	1,406
SIA	16,628	15,489	20,614	20,810	17,482	13,728	26,492	27,653	29,730	30,233	37,007	35,447	25,932	21,871	23,462	16,458	12,902	8,991	8,019	7,171
TOTAL	32,629	37,107	35,735	30,248	26,905	30,391	39,239	43,253	50,420	46,276	51,645	47,232	29,521	23,607	25,352	17,474	14,841	10,976	9,331	8,577

MILITARY

	1991	1992	1993	1994	1995	1996	1997	1998	1999	2000	2001	2002	2003	2004	2005	2006	2007	2008	2009	2010
NMIA	3,705	3,893	2,354	2,230	1,548	2,148	1,503	910	1,580	1,710	2,175	2,037	2,010	1,282	1,256	1,474	2,397	3,010	3,161	4,218
SIA	1,134	934	562	640	452	550	477	286	574	272	273	340	573	580	346	290	441	246	311	300
TOTAL	4,839	4,827	2,916	2,870	2,000	2,698	1,980	1,196	2,154	1,982	2,448	2,377	2,583	1,862	1,602	1,764	2,838	3,256	3,472	4,518

PRIVATE

	1991	1992	1993	1994	1995	1996	1997	1998	1999	2000	2001	2002	2003	2004	2005	2006	2007	2008	2009	2010
NMIA	1,469	2,171	2,549	2,857	2,743	2,149	1,856	1,489	1,950	3,197	2,831	5,166	2,896	3,435	4,129	4,305	5,464	5,941	4,598	4,705
SIA	2,185	2,452	3,010	3,883	5,572	6,086	2,857	3,163	3,726	2,685	2,711	2,268	2,095	2,352	1,845	2,551	3,237	5,256	4,757	5,157
TOTAL	3,654	4,623	5,559	6,740	8,315	8,235	4,713	4,652	5,676	5,882	5,542	7,434	4,991	5,787	5,974	6,856	8,701	11,197	9,355	9,862

**INTERNATIONAL AIRPORTS
CHANGES IN AIRCRAFT MOVEMENTS
1999-2010**

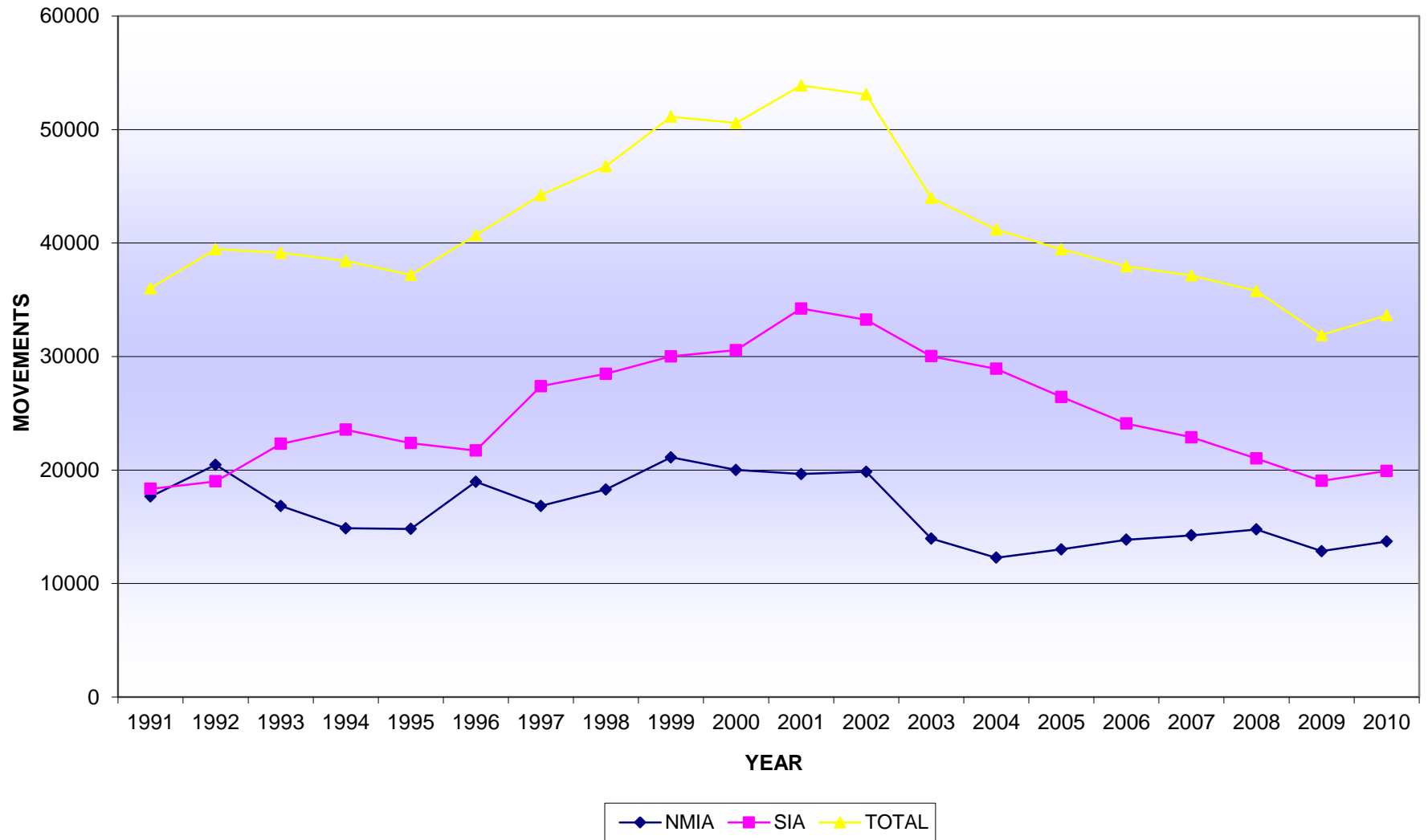
	2010	% Change	2009	% Change	2008	% Change	2007	% Change	2006	% Change	2005	% Change	2004	% Change	2003	% Change	2002	% Change	2001	% Change	2000	% Change	1999
Norman Manley Int'l Airport/KINGSTON	MOVEMENT	2010/2009	MOVEMENT	2009/2008	MOVEMENT	2008/2007	MOVEMENT	2007/2006	MOVEMENT	2006/2005	MOVEMENT	2005/2004	MOVEMENT	2004/2003	MOVEMENT	2003/2002	MOVEMENT	2002/2001	MOVEMENT	2001/2000	MOVEMENT	2000/1999	MOVEMENT
		Variance		Variance		Variance		Variance		Variance		Variance		Variance		Variance		Variance		Variance		Variance	
TOTAL MOVEMENTS	27,405	6.7%	25,684	-13.0%	29,523	3.7%	28,476	2.8%	27,699	6.6%	25,994	6.2%	24,467	-12.3%	27,891	-29.7%	39,678	1.0%	39,296	-1.7%	39,981	-5.3%	42,214
International Scheduled Commercial	16,541	1.1%	16,357	3.9%	15,750	-0.8%	15,872	-8.9%	17,423	16.7%	14,935	-2.4%	15,309	0.2%	15,272	-5.4%	16,139	-6.5%	17,252	-1.5%	17,522	4.3%	16,797
International Non-Scheduled Commercial	535	109.0%	256	-91.0%	2,837	1.2%	2,804	-19.4%	3,481	-10.4%	3,884	42.8%	2,719	-34.1%	4,124	-9.4%	4,551	89.6%	2,400	59.0%	1,509	26.1%	1,197
Domestic Commercial	1,406	7.2%	1,312	-33.9%	1,985	2.4%	1,939	90.8%	1,016	-46.2%	1,890	8.9%	1,736	-51.6%	3,589	-69.5%	11,785	-19.5%	14,638	-8.8%	16,043	-22.5%	20,690
Military	4,218	33.4%	3,161	5.0%	3,010	25.6%	2,397	62.6%	1,474	17.4%	1,256	-2.0%	1,282	-36.2%	2,010	-1.3%	2,037	-6.3%	2,175	27.2%	1,710	8.2%	1,580
Private	4,705	2.3%	4,598	-22.6%	5,941	8.7%	5,464	26.9%	4,305	4.3%	4,129	20.2%	3,435	18.6%	2,896	-43.9%	5,166	82.5%	2,831	-11.4%	3,197	63.9%	1,950
Total Arrivals	13,707	6.6%	12,854	-13.0%	14,768	3.6%	14,251	2.8%	13,863	6.5%	13,012	6.0%	12,275	-12.1%	13,967	-29.7%	19,855	1.1%	19,646	-1.8%	20,006	-5.3%	21,118
Total Departures	13,698	6.8%	12,830	-13.0%	14,755	3.7%	14,225	2.8%	13,836	6.6%	12,982	6.5%	12,192	-12.4%	13,924	-29.8%	19,823	0.9%	19,650	-1.6%	19,975	-5.3%	21,096

	2010	% Change	2009	% Change	2008	% Change	2007	% Change	2006	% Change	2005	% Change	2004	% Change	2003	% Change	2002	% Change	2001	% Change	2000	% Change	1999
Sangsters Int'l Airport/MONTEGO BAY	MOVEMENT	2010/2009	MOVEMENT	2009/2008	MOVEMENT	2008/2007	MOVEMENT	2007/2006	MOVEMENT	2006/2005	MOVEMENT	2005/2004	MOVEMENT	2004/2003	MOVEMENT	2003/2002	MOVEMENT	2002/2001	MOVEMENT	2001/2000	MOVEMENT	2000/1999	MOVEMENT
		Variance		Variance		Variance		Variance		Variance		Variance		Variance		Variance		Variance		Variance		Variance	
TOTAL MOVEMENTS	39,845	4.5%	38,116	-9.1%	41,910	-8.5%	45,789	-4.6%	48,011	-9.3%	52,942	-8.5%	57,862	-3.7%	60,076	-9.7%	66,518	-2.9%	68,535	12.1%	61,116	1.7%	60,065
International Scheduled Commercial	19,177	0.1%	19,150	-11.8%	21,720	4.0%	20,890	0.0%	20,895	4.7%	19,959	-23.3%	26,026	5.0%	24,794	7.3%	23,100	1.2%	22,818	5.8%	21,569	7.2%	20,023
International Non-Scheduled Commercial	8,040	36.8%	5,879	3.2%	5,697	-31.5%	8,319	6.4%	7,817	6.6%	7,330	4.2%	7,033	5.3%	6,682	24.6%	5,363	-6.3%	5,726	-9.9%	6,357	5.4%	6,012
Domestic Commercial	7,171	-10.6%	8,019	-10.8%	8,991	-30.3%	12,902	-21.6%	16,458	-29.9%	23,462	7.3%	21,871	-15.7%	25,932	-26.8%	35,447	-4.2%	37,007	22.4%	30,233	1.7%	29,730
Military	300	-3.5%	311	26.4%	246	-44.2%	441	52.1%	290	-16.2%	346	-40.3%	580	1.2%	573	68.5%	340	24.5%	273	0.4%	272	-111.0%	574
Private	5,157	8.4%	4,757	-9.5%	5,256	62.4%	3,237	26.9%	2,551	38.3%	1,845	-21.6%	2,352	12.3%	2,095	-7.6%	2,268	-16.3%	2,711	1.0%	2,685	-38.8%	3,726
Total Arrivals	19,923	4.6%	19,042	-9.4%	21,013	-8.2%	22,888	-5.0%	24,093	-8.9%	26,434	-8.6%	28,917	-3.7%	30,024	-9.7%	33,249	-2.9%	34,232	12.0%	30,564	1.8%	30,016
Total Departures	19,922	4.4%	19,074	-8.7%	20,897	-8.8%	22,901	-4.3%	23,918	-9.8%	26,508	-8.4%	28,945	-3.7%	30,052	-9.7%	33,269	-3.0%	34,303	12.3%	30,552	1.6%	30,049

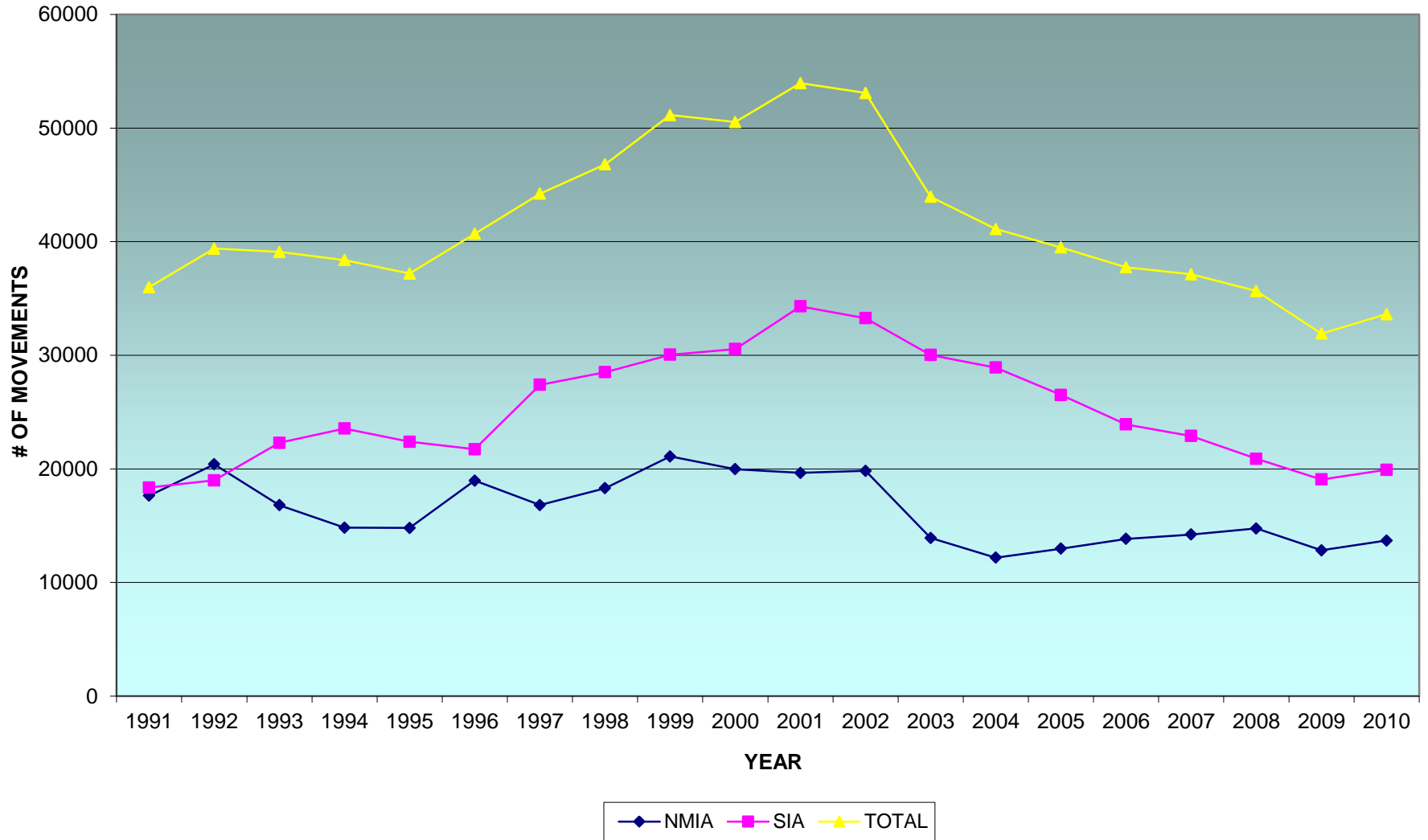
**INTERNATIONAL AIRPORTS
CHANGES IN AIRCRAFT MOVEMENTS
1999-2010**

	2010	% Change	2009	% Change	2008	% Change	2007	% Change	2006	% Change	2005	% Change	2004	% Change	2003	% Change	2002	% Change	2001	% Change	2000	% Change	1999
	MOVEMENT	2010/2009	MOVEMENT	2009/2008	MOVEMENT	2008/2007	MOVEMENT	2007/2006	MOVEMENT	2006/2005	MOVEMENT	2005/2004	MOVEMENT	2004/2003	MOVEMENT	2003/2002	MOVEMENT	2002/2001	MOVEMENT	2001/2000	MOVEMENT	2000/1999	MOVEMENT
		Variance		Variance		Variance		Variance		Variance		Variance		Variance		Variance		Variance		Variance		Variance	
Number of Airports in Survey	2		2		2		2		2		2		2		2		2		2		2		2
GRAND TOTAL MOVEMENTS	67,250	5.4%	63,800	-10.7%	71,433	-3.8%	74,265	-1.9%	75,710	-4.1%	78,936	-4.1%	82,329	-6.4%	87,967	-17.2%	106,196	-1.5%	107,831	6.7%	101,097	-1%	102,279
International Scheduled Commercial	35,718	0.6%	35,507	-5.2%	37,470	1.9%	36,762	-4.1%	38,318	9.8%	34,894	-15.6%	41,335	3.2%	40,066	2.1%	39,239	-2.1%	40,070	2.5%	39,091	6%	36,820
International Non-Scheduled Commercial	8,575	39.8%	6,135	-28.1%	8,534	-23.3%	11,123	-1.5%	11,298	0.7%	11,214	15.0%	9,752	-9.8%	10,806	9.0%	9,914	22.0%	8,126	3.3%	7,866	9%	7,209
Domestic Commercial	8,577	-8.1%	9,331	-15.0%	10,976	-26.0%	14,841	-15.1%	17,474	-31.1%	25,352	7.4%	23,607	-20.0%	29,521	-37.5%	47,232	-8.5%	51,645	11.6%	46,276	-8%	50,420
Military	4,518	30.1%	3,472	6.6%	3,256	14.7%	2,838	60.9%	1,764	10.1%	1,602	-14.0%	1,862	-27.9%	2,583	8.7%	2,377	-2.8%	2,445	23.4%	1,982	-8%	2,154
Private	9,862	5.4%	9,355	-16.5%	11,197	28.7%	8,701	26.9%	6,856	14.8%	5,974	3.2%	5,787	15.9%	4,991	-32.9%	7,434	34.1%	5,542	-5.8%	5,882	4%	5,676
Total Arrivals	33,630	5.4%	31,896	-10.9%	35,781	-3.7%	37,139	-2.2%	37,956	-3.8%	39,446	-4.2%	41,192	-6.4%	43,991	-17.2%	53,104	-1.4%	53,878	6.5%	50,570	-1%	51,134
Total Departures	33,620	5.4%	31,904	-10.5%	35,652	-4.0%	37,126	-1.7%	37,754	-4.4%	39,490	-4.0%	41,137	-6.5%	43,976	-17.2%	53,092	-1.6%	53,953	6.8%	50,527	-1%	51,145

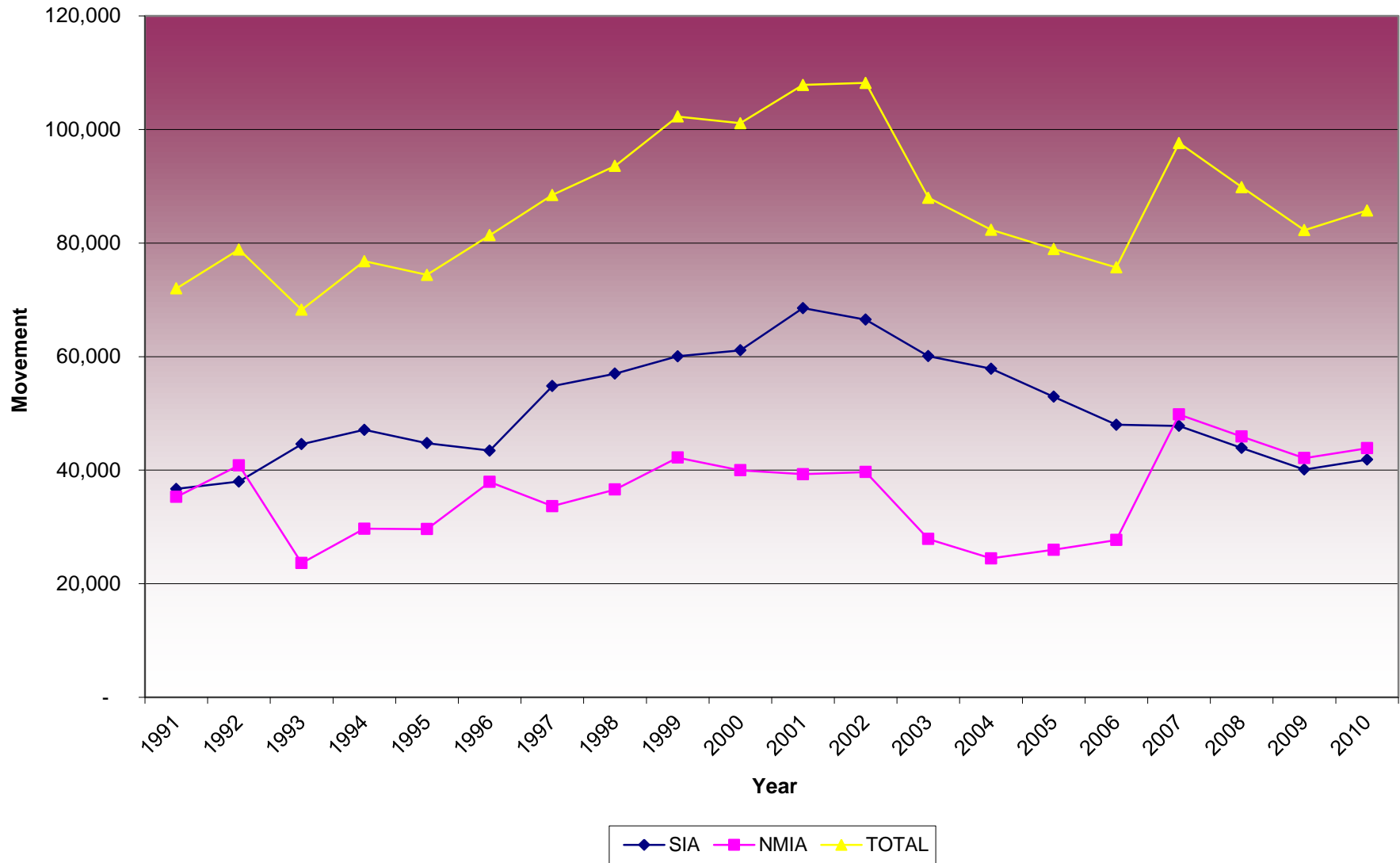
AIRCRAFT MOVEMENT (1991 - 2010)
ARRIVALS



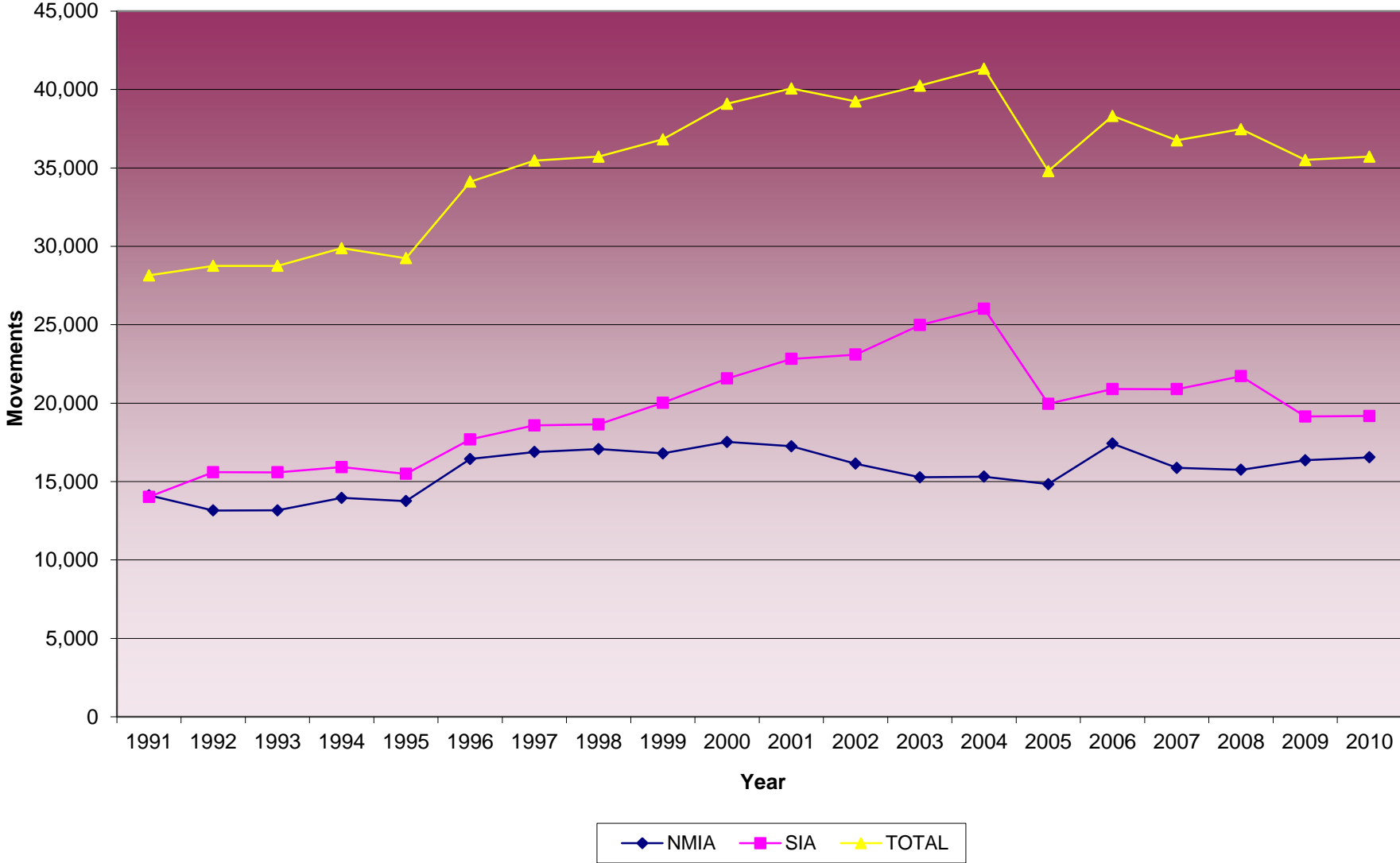
AIRCRAFT MOVEMENTS (1991-2010)
DEPARTURES



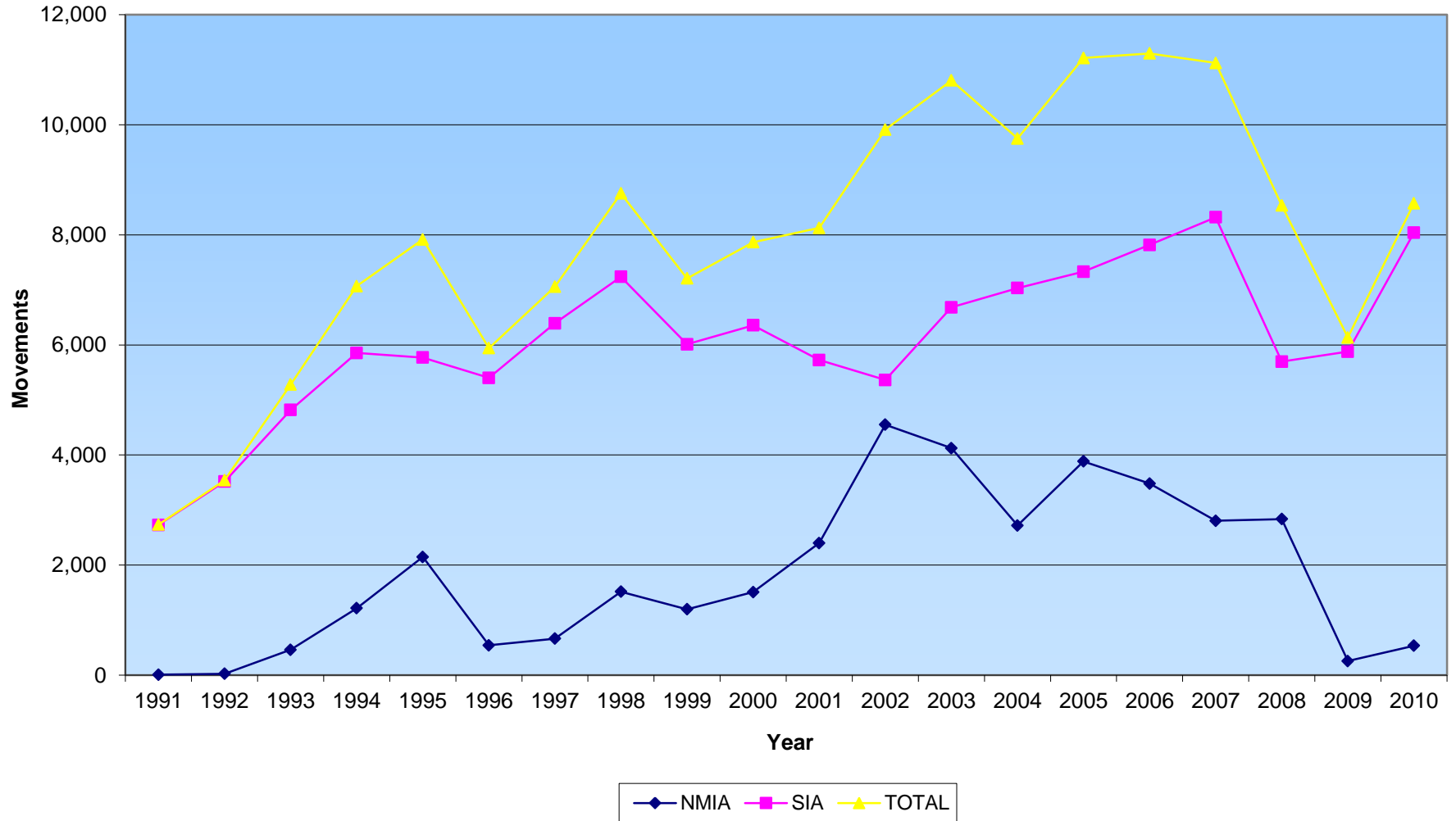
TOTAL AIRCRAFT MOVEMENTS BY AIRPORT (1991 - 2010)



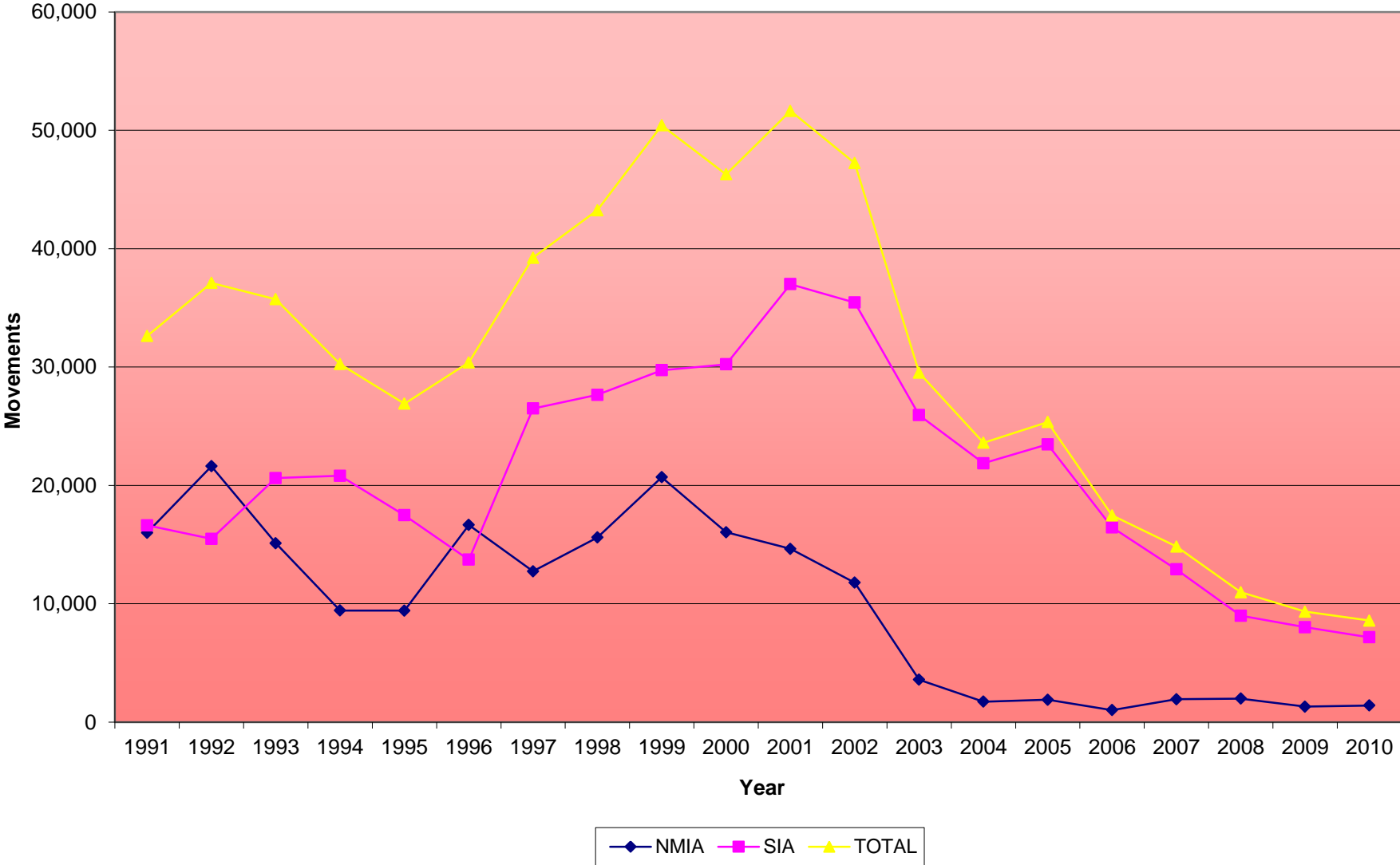
**INTERNATIONAL SCHEDULED
AIRCRAFT MOVEMENTS BY AIRPORT (1991-2010)**



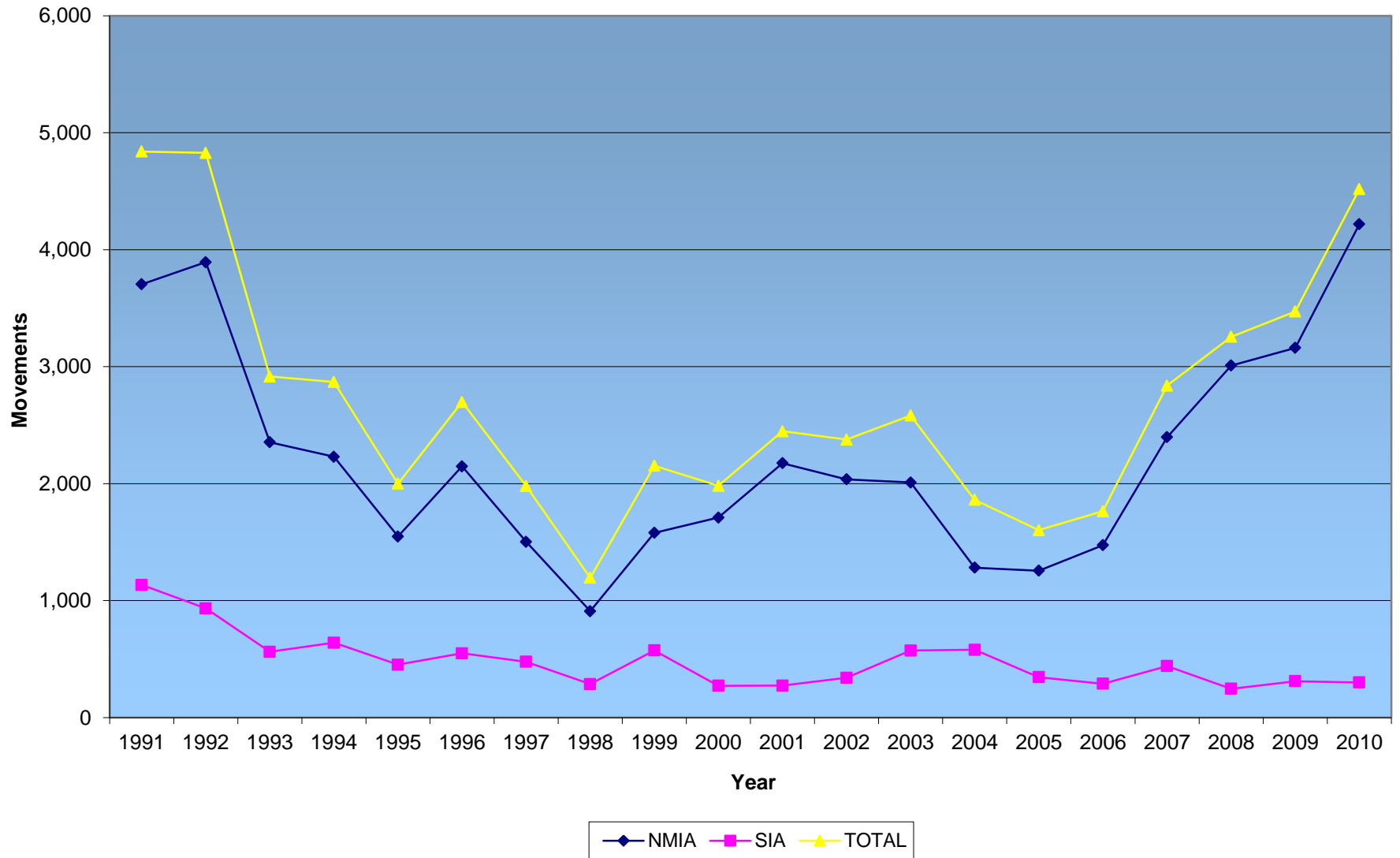
**INTERNATIONAL NON-SCHEDULED
AIRCRAFT MOVEMENTS BY AIRPORT (1991 - 2010)**



Domestic Aircraft Movements by Airport (1991 - 2010)



Military Aircraft Movements by Airport (1991 - 2010)



Private Aircraft Movements by Airport (1991 - 2010)

