

**INBOUND CARGO STATISTICS**  
**NMIA VS SIA**  
**1985-2010**

<b>MONTH</b>	<b>NMIA (MT)</b>	<b>Variance NMIA/SIA</b>	<b>% inc/dec</b>	<b>SIA (MT)</b>
<b>1985</b>	7,230.00	5,430.00	301.67	1,800.00
<b>1986</b>	7,710.00	6,085.00	374.46	1,625.00
<b>1987</b>	8,373.00	5,714.00	214.89	2,659.00
<b>1988</b>	17,328.00	14,400.00	491.80	2,928.00
<b>1989</b>	15,133.00	13,156.00	665.45	1,977.00
<b>1990</b>	12,167.00	9,296.00	323.79	2,871.00
<b>1991</b>	10,723.00	9,734.00	984.23	989.00
<b>1992</b>	8,809.00	1,996.00	29.30	6,813.00
<b>1993</b>	11,923.00	1,255.00	11.76	10,668.00
<b>1994</b>	13,355.00	8,928.00	201.67	4,427.00
<b>1995</b>	15,890.00	11,976.00	305.98	3,914.00
<b>1996</b>	14,782.00	10,688.00	261.06	4,094.00
<b>1997</b>	12,485.00	7,560.00	153.50	4,925.00
<b>1998</b>	14,760.00	11,127.00	306.28	3,633.00
<b>1999</b>	12,209.00	8,305.00	212.73	3,904.00
<b>2000</b>	11,238.00	7,983.00	245.25	3,255.00
<b>2001</b>	9,504.00	6,754.00	245.60	2,750.00
<b>2002</b>	6,919.00	4,642.00	203.86	2,277.00
<b>2003</b>	8,089.00	5,823.00	256.97	2,266.00
<b>2004</b>	8,100.00	5,869.00	263.07	2,231.00
<b>2005</b>	8,294.00	5,473.00	194.01	2,821.00
<b>2006</b>	7,454.00	5,768.00	342.11	1,686.00
<b>2007</b>	7,779.00	5,983.63	333.28	1,795.37
<b>2008</b>	13,177.00	10,985.52	501.28	2,191.48
<b>2009</b>	9,000.00	7,496.13	498.46	1,503.87
<b>2010</b>	8,134.00	6,855.89	536.41	1,278.11

\*MT: Metric Tonnes

## OUTBOUND CARGO STATISTICS

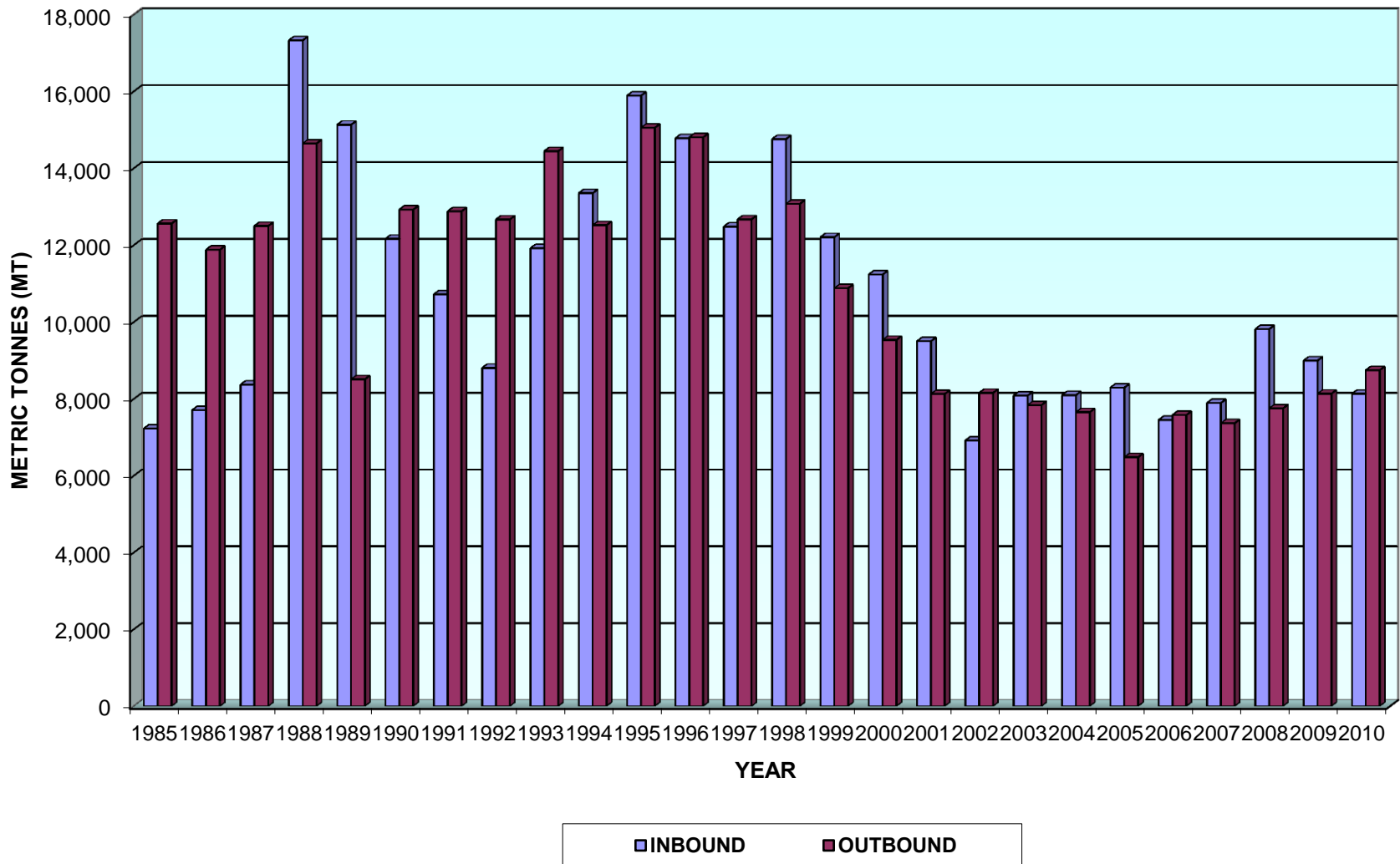
### NMIA VS SIA

1985-2010

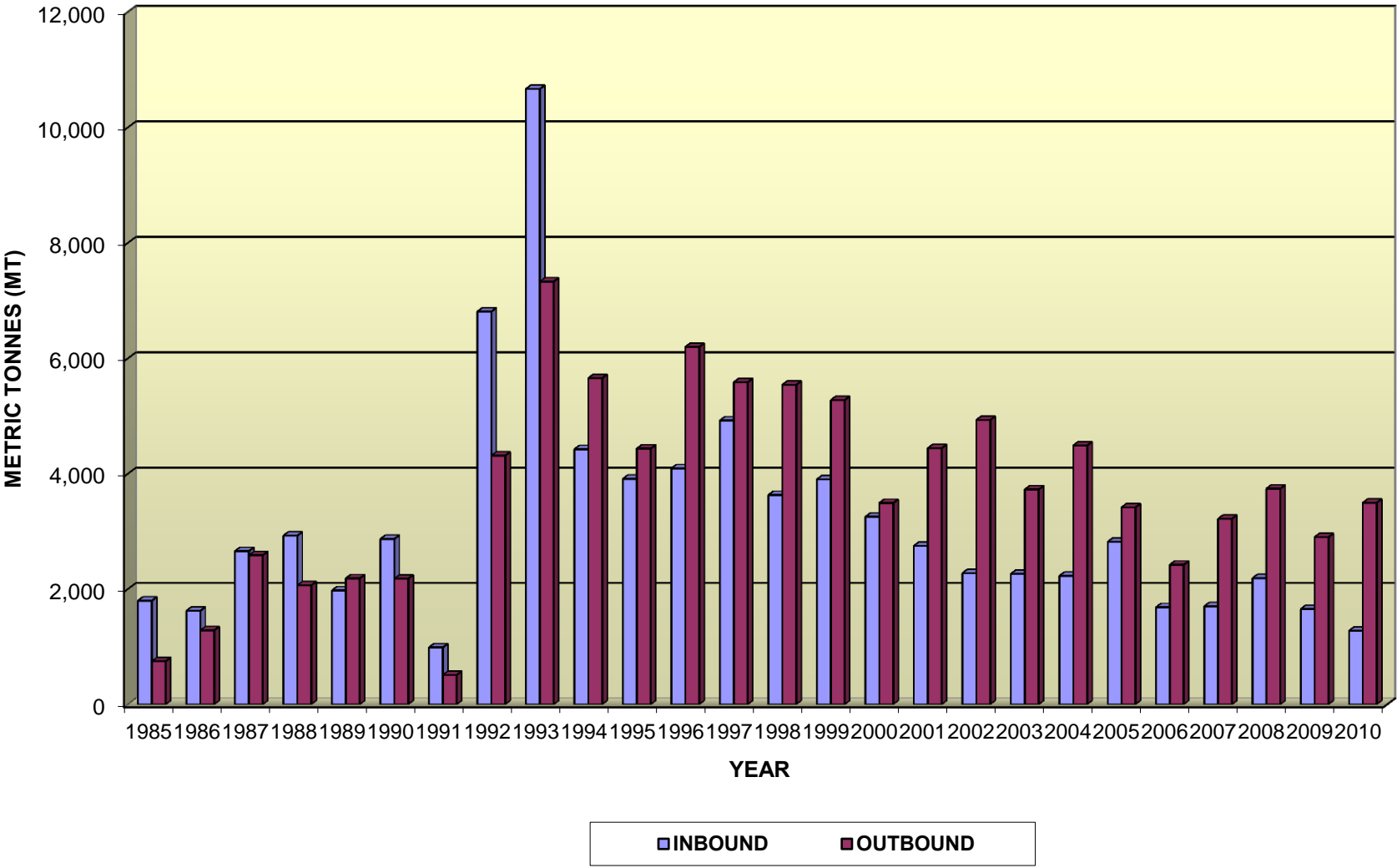
<b>MONTH</b>	<b>NMIA (MT)</b>	<b>Variance NMIA/SIA</b>	<b>% inc/dec</b>	<b>SIA (MT)</b>
<b>1985</b>	12,564.00	11,814.00	1,575.20	750.00
<b>1986</b>	11,883.00	10,597.00	824.03	1,286.00
<b>1987</b>	12,500.00	9,912.00	383.00	2,588.00
<b>1988</b>	14,645.00	12,579.00	608.86	2,066.00
<b>1989</b>	8,513.00	6,326.00	289.25	2,187.00
<b>1990</b>	12,927.00	10,745.00	492.44	2,182.00
<b>1991</b>	12,882.00	12,370.00	2,416.02	512.00
<b>1992</b>	12,670.00	8,353.00	193.49	4,317.00
<b>1993</b>	14,446.00	7,114.00	97.03	7,332.00
<b>1994</b>	12,521.00	6,862.00	121.26	5,659.00
<b>1995</b>	15,055.00	10,618.00	239.31	4,437.00
<b>1996</b>	14,806.00	8,606.00	138.81	6,200.00
<b>1997</b>	12,672.00	7,084.00	126.77	5,588.00
<b>1998</b>	13,075.00	7,532.00	135.88	5,543.00
<b>1999</b>	10,882.00	5,604.00	106.18	5,278.00
<b>2000</b>	9,539.00	6,045.00	173.01	3,494.00
<b>2001</b>	8,131.00	3,687.00	82.97	4,444.00
<b>2002</b>	8,160.00	3,227.00	65.42	4,933.00
<b>2003</b>	7,839.00	4,111.00	110.27	3,728.00
<b>2004</b>	7,657.00	3,166.00	70.50	4,491.00
<b>2005</b>	6,484.00	3,066.66	89.74	3,417.34
<b>2006</b>	7,582.00	5,159.00	212.92	2,423.00
<b>2007</b>	7,185.00	3,523.51	96.23	3,661.49
<b>2008</b>	11,517.00	7,772.61	207.58	3,744.39
<b>2009</b>	8,138.00	5,104.94	168.31	3,033.06
<b>2010</b>	8,749.00	5,251.20	150.13	3,497.80

\*MT: Metric Tonnes

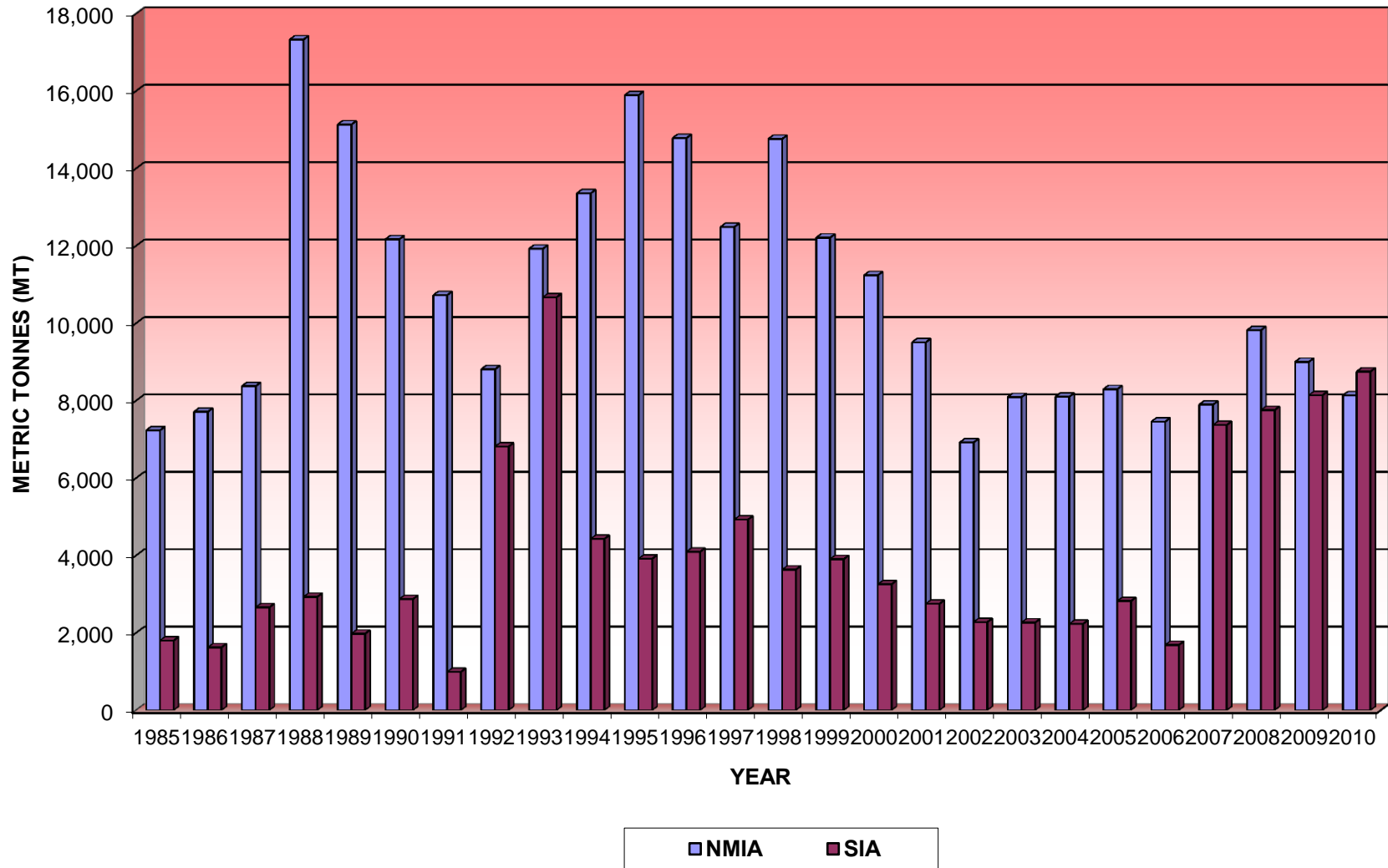
**CARGO STATISTICS/1985-2010**  
**NORMAN MANLEY INTERNATIONAL AIRPORT/KIN**



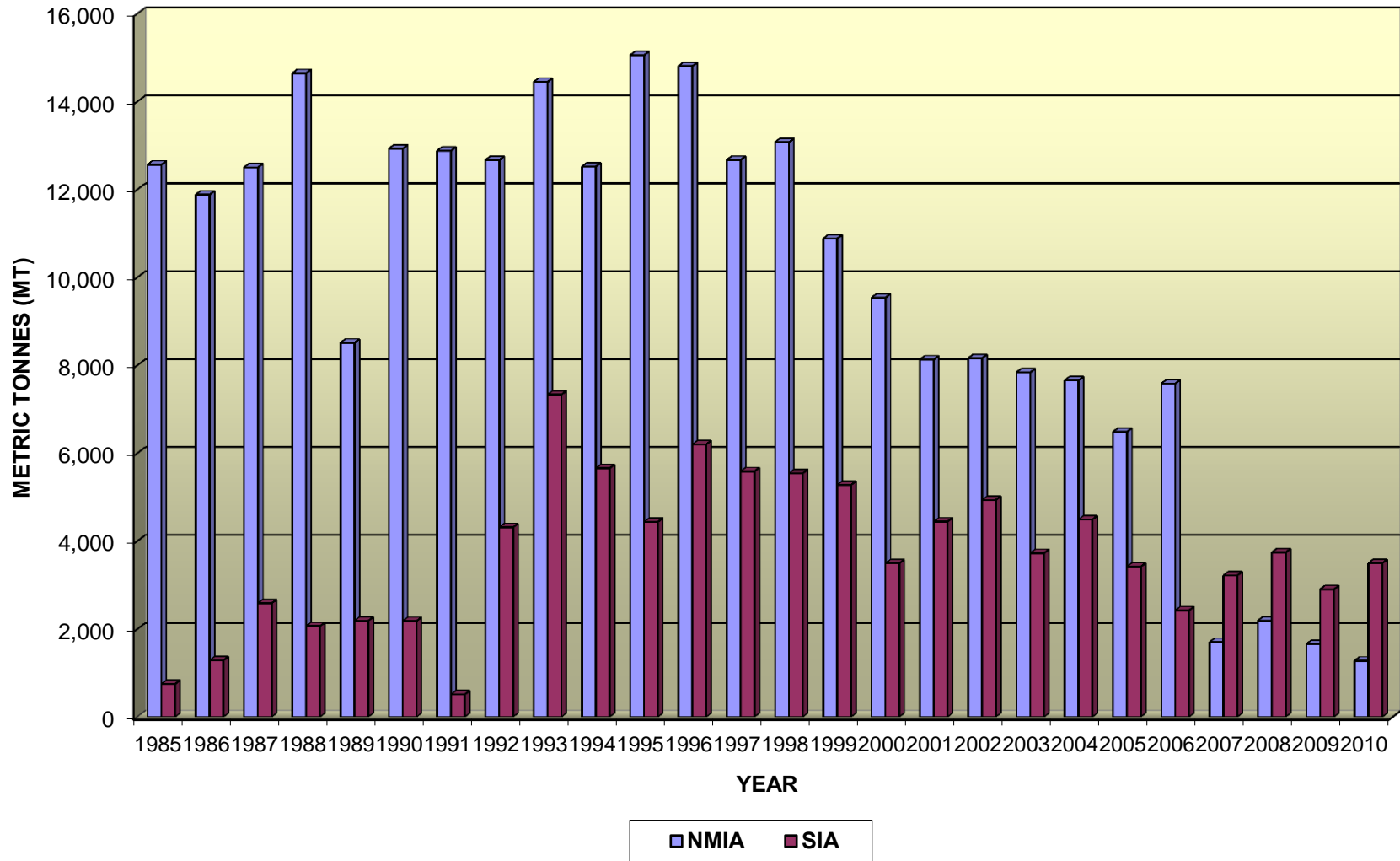
**CARGO STATISTICS/1985-2010**  
**SANGSTER INTERNATIONAL AIRPORT/MBJ**



**COMPARISON INBOUND CARGO STATISTICS 1985-2010  
(NMIA VS SIA)**



**COMPARISON OUTBOUND CARGO STATISTICS 1985-2010**  
**NMIA VS SIA)**



**CARGO STATISTICS/1985-2010**  
**NORMAN MANLEY INTERNATIONAL AIRPORT/KIN**

<b>YEAR</b>	<b>INBOUND (MT)</b>	<b>OUTBOUND (MT)</b>	<b>TOTAL (MT)</b>
<b>1985</b>	7,230.00	12,564.00	<b>19,794.00</b>
<b>1986</b>	7,710.00	11,883.00	<b>19,593.00</b>
<b>1987</b>	8,373.00	12,500.00	<b>20,873.00</b>
<b>1988</b>	17,328.00	14,645.00	<b>31,973.00</b>
<b>1989</b>	15,133.00	8,513.00	<b>23,646.00</b>
<b>1990</b>	12,167.00	12,927.00	<b>25,094.00</b>
<b>1991</b>	10,723.00	12,882.00	<b>23,605.00</b>
<b>1992</b>	8,809.00	12,670.00	<b>21,479.00</b>
<b>1993</b>	11,923.00	14,446.00	<b>26,369.00</b>
<b>1994</b>	13,355.00	12,521.00	<b>25,876.00</b>
<b>1995</b>	15,890.00	15,055.00	<b>30,945.00</b>
<b>1996</b>	14,782.00	14,806.00	<b>29,588.00</b>
<b>1997</b>	12,485.00	12,672.00	<b>25,157.00</b>
<b>1998</b>	14,760.00	13,075.00	<b>27,835.00</b>
<b>1999</b>	12,209.00	10,882.00	<b>23,091.00</b>
<b>2000</b>	11,238.00	9,539.00	<b>20,777.00</b>
<b>2001</b>	9,504.00	8,131.00	<b>17,635.00</b>
<b>2002</b>	6,919.00	8,160.00	<b>15,079.00</b>
<b>2003</b>	8,089.00	7,839.00	<b>15,928.00</b>
<b>2004</b>	8,100.00	7,657.00	<b>15,757.00</b>
<b>2005</b>	8,294.00	6,484.00	<b>14,778.00</b>
<b>2006</b>	7,454.00	7,582.00	<b>15,036.00</b>
<b>2007</b>	7,896.00	7,369.00	<b>15,265.00</b>
<b>2008</b>	9,819.00	7,755.00	<b>17,574.00</b>
<b>2009</b>	9,000.00	8,138.00	<b>17,138.00</b>
<b>2010</b>	8,134.00	8,749.00	<b>16,883.00</b>

\*MT: Metric Tonnes

**CARGO STATISTICS/1985-2010**  
**SANGSTER INTERNATIONAL AIRPORT/MBJ**

<b>YEAR</b>	<b>INBOUND (MT)</b>	<b>OUTBOUND (MT)</b>	<b>TOTAL (MT)</b>
<b>1985</b>	1,800.00	750.00	<b>2,550.00</b>
<b>1986</b>	1,625.00	1,286.00	<b>2,911.00</b>
<b>1987</b>	2,659.00	2,588.00	<b>5,247.00</b>
<b>1988</b>	2,928.00	2,066.00	<b>4,994.00</b>
<b>1989</b>	1,977.00	2,187.00	<b>4,164.00</b>
<b>1990</b>	2,871.00	2,182.00	<b>5,053.00</b>
<b>1991</b>	989.00	512.00	<b>1,501.00</b>
<b>1992</b>	6,813.00	4,317.00	<b>11,130.00</b>
<b>1993</b>	10,668.00	7,332.00	<b>18,000.00</b>
<b>1994</b>	4,427.00	5,659.00	<b>10,086.00</b>
<b>1995</b>	3,914.00	4,437.00	<b>8,351.00</b>
<b>1996</b>	4,094.00	6,200.00	<b>10,294.00</b>
<b>1997</b>	4,925.00	5,588.00	<b>10,513.00</b>
<b>1998</b>	3,633.00	5,543.00	<b>9,176.00</b>
<b>1999</b>	3,904.00	5,278.00	<b>9,182.00</b>
<b>2000</b>	3,255.00	3,494.00	<b>6,749.00</b>
<b>2001</b>	2,750.00	4,444.00	<b>7,194.00</b>
<b>2002</b>	2,277.00	4,933.00	<b>7,210.00</b>
<b>2003</b>	2,266.00	3,728.00	<b>5,994.00</b>
<b>2004</b>	2,272.62	3,471.75	<b>5,744.37</b>
<b>2005</b>	2,821.00	3,417.34	<b>6,238.34</b>
<b>2006</b>	1,686.00	2,423.00	<b>4,109.00</b>
<b>2007</b>	1,703.00	3,220.00	<b>4,923.00</b>
<b>2008</b>	2,191.00	3,742.00	<b>5,933.00</b>
<b>2009</b>	1,655.00	2,902.00	<b>4,557.00</b>
<b>2010</b>	1,278.11	3,497.80	<b>4,775.91</b>

\*MT: Metric Tonnes



**TOTAL CARGO MOVEMENT-NMIA & SIA**  
**1985-2010**

<b>YEAR</b>	<b>NMIA (MT)</b>	<b>SIA (MT)</b>
1985	19,794.00	2,550.00
1986	19,593.00	2,911.00
1987	20,873.00	5,247.00
1988	31,973.00	4,994.00
1989	23,646.00	4,164.00
1990	25,094.00	5,053.00
1991	23,605.00	1,501.00
1992	21,479.00	11,130.00
1993	26,369.00	18,000.00
1994	25,876.00	10,086.00
1995	30,945.00	8,351.00
1996	29,588.00	10,294.00
1997	25,157.00	10,513.00
1998	27,835.00	9,176.00
1999	23,091.00	9,182.00
2000	20,777.00	6,749.00
2001	17,635.00	7,194.00
2002	15,079.00	7,210.00
2003	15,928.00	5,994.00
2004	15,757.00	6,722.00
2005	14,778.00	6,238.34
2006	16,036.00	4,109.00
2007	15,265.00	4,923.00
2008	17,574.00	5,933.00
2009	17,138.00	4,557.00
2010	16,883.00	4,775.91

\*MT: Metric Tonnes